



## IRON FER RAPID TEST

Rapid immuno-chromatographic test for the detection of ferritin in whole blood or serum samples



### IRON STORAGE & FERRITIN

Ferritin is a protein whose role is to store iron in the body, essential element for oxygen transportation, cells multiplication and tissues and organs structure building. The level of ferritin is an excellent indicator of the amount of iron available to the body. Low levels of this protein in the blood are an indication of depleted iron stores, a condition that precedes the development of anaemia. Anemia affects 27% of the world's population: iron-deficiency anemia is the dominant cause ( $\geq 60\%$ ).

### WHO ARE THE INTENDED USERS

Healthcare professionals with patients who present the following symptoms: unexplained fatigue, chronic headaches, leg pains, shortness of breath and persons suffering from gastrointestinal disorders such as Celiac disease and Helicobacter pylori infection. Who eat a purely vegetarian diet is also more likely to have iron deficiency. The test is also useful for everyone who takes integrators and wishes to monitor iron levels.

### TEST PRINCIPLE

IRON FER RAPID TEST is a rapid immunochromatographic lateral flow assay for the detection of ferritin in whole blood, thanks to special gold conjugate antibodies embedded to a test strip.

### TECH SPECS

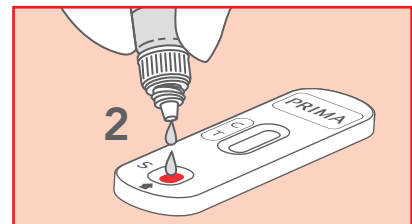
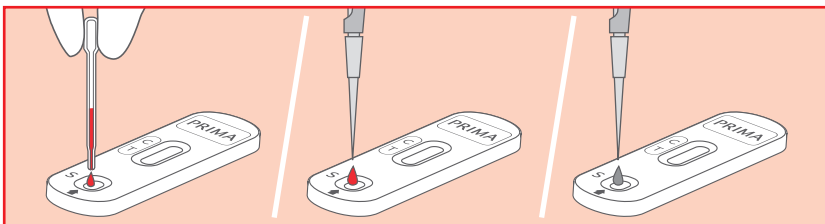
CUT-OFF	SENSITIVITY	SPECIFICITY	OVERALL ACCURACY
30 ng/mL	100,00%	100,00%	100,00%

Performance data obtained by clinical study with 120 participants enrolled. Biokit Quantex Ferritin has been utilized as reference method.

### CLINICAL EVIDENCES

1. Wick M, Pingerra W, Lehmann P, Iron metabolism: diagnosis and therapy of anemias, 5th ed, Vienna, New York: Springer Verlag, 2003; p. 151.
2. Worwood M. The laboratory assessment of iron status - an update. Clin Chim Acta 1997; 259: 3-23.
3. Kaltwasser JP, Werner E. Diagnosis and clinical evaluation of iron overload. Baillieres Clin Haematol 1989; 2; 363-89.
4. Baynes RD, Cook JD. Current issues in iron deficiency. Curr Opin Hematol 1996; 3:145-9.
5. Lee MH, Means RT Jr. Extremely elevated serum ferritin levels in a university hospital: associated diseases and clinical significance. Am J Med 1996; 98: 566-71.

### HOW TO USE IT



CONTENT: 20 test cassettes; 20 pipettes; 1 vial with diluent; 1 instructions for use leaflet.

REF	DESCRIPTION	NUMBER OF TESTS	SHELF LIFE
800025IP-20P	IRON FER RAPID TEST	20 TESTS	30 MONTHS