



OVULATION LH TEST

Self-test for the detection of luteinizing hormone (LH) in urine



LH AND OVULATION

During the entire childbearing age, the period of time between puberty and menopause, women reproductive system meets monthly a series of structural and functional important changes. This happens because of the continuous changes in estrogen levels and progesterone, hormones that are regulated by the Hypothalamus-Hypophysis-Ovary axis. Their concentrations are different during the 4 phases of menstrual cycle: menstruation, follicular phase, ovulation and luteal phase. During the ovulation phase, which occurs around the 12th/13th day of the menstrual cycle, the level of estrogen in the blood is so high that the hypophysis starts the production of the Luteinizing Hormone (LH), thus determining the breakdown of the follicle and the release of the egg cell, ready to be fertilized. The egg cell remains fertilizable up to the next 24 hours.

WHO ARE THE INTENDED USERS

Women who want to conceive.

WHY - BENEFITS

Measuring the levels of hormone LH in the urine is an effective method to optimize the possibility of conception.

TEST PRINCIPLE

OVULATION LH TEST is an immunochromatographic assay that detects LH through special goldconjugated monoclonal antibodies included in the reactive strip.

TECH SPECS

CUT-OFF	SENSITIVITY	SPECIFICITY	OVERALL ACCURACY
25 mIU/mL	100,00%	97,14%	98,11%

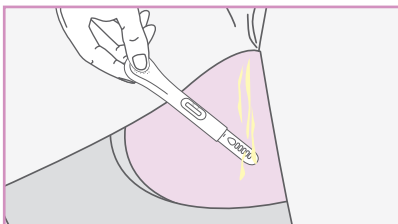
Performance data obtained by clinical study with 53 participants enrolled. iXensor Ovulation LH test (Immunochromatographic Lateral Flow) has been utilized as reference method.

CLINICAL EVIDENCES

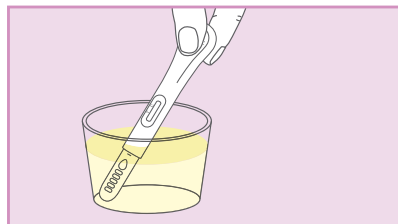
1. Su HW, Yi YC, Wei TY, Chang TC, Cheng CM "Detection of ovulation, a review of currently available method" Bioeng Transl Med. 2017 May 16;2(3):238-246.
2. Leiva RA, Bouchard TP, Abdullah SH, Ecochard R.: "Urinary Luteinizing Hormone Tests: Which concentration threshold best predict ovulation?" Front public health 2017, 5: 320.

HOW TO USE IT

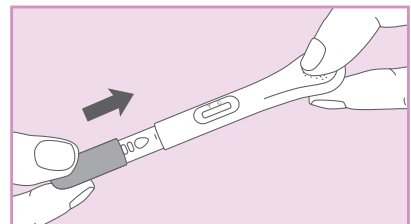
1) Remove the protective cap and place the absorbing tip right under the flow of urine for at least 10 seconds.



2) If easier, collect the urine in a clean, dry, residue-free container and dip the absorbing tip into the urine for 10 seconds.



3) Place the protective cap back onto the absorbing tip. Wait 5 minutes before reading the result.



CONTENT: 5 sealed aluminium pouches containing each: 1 spoon device and 1 desiccant bag; 1 instructions for use leaflet.



REF	DESCRIPTION	NUMBER OF TESTS	SHELF LIFE
820050-5	OVULATION LH TEST	5 TESTS	30 MONTHS