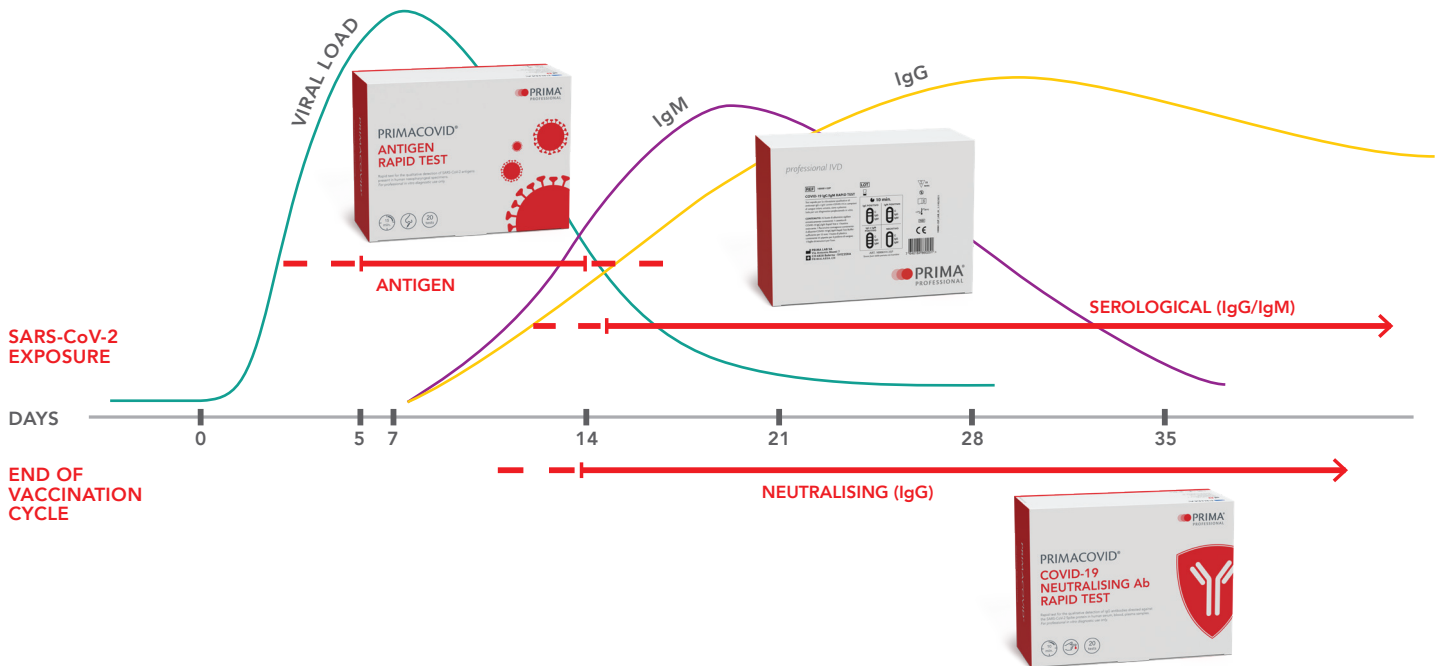


FIND OUT ALL THE PRODUCTS OF THE LINE

Your partner for rapid testing

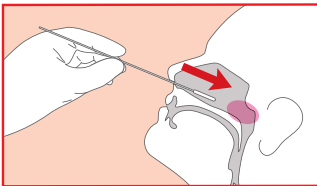


ANTIGEN RAPID TEST

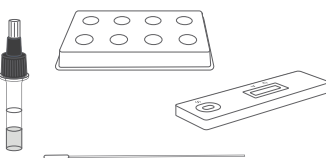
REF. 200063-20P

in pre-symptomatic and early symptomatic cases up to 5 days from symptoms onset

SAMPLE



CONTENT



READING TIME

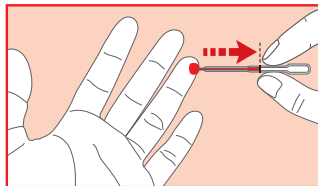


COVID-19 IgG/IgM RAPID TEST

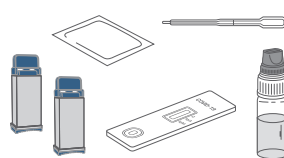
REF. 100061-25P

between the 3rd and the 6th week after symptoms onset (IgG remains high, IgM slowly decreases)

SAMPLE



CONTENT



READING TIME

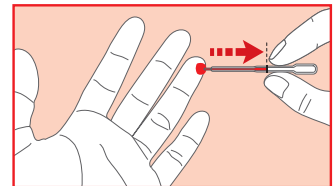


COVID-19 NEUTRALISING Ab RAPID TEST

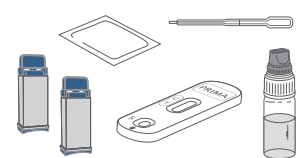
REF. 800065-20P

in order to determine the post-vaccination seroconversion, perform the test starting from 14 days after the end of the vaccination cycle

SAMPLE



CONTENT



READING TIME

